

СЕМ. HYMENOLOMATACEAE Ignatov & Fedosov — ГИМЕНОЛОМОВЫЕ

1.

; ; , ;

..... 1. *H. crispulum*

..... 2. *H. mulahaceni*

1. Lamina unistratose; cuticular papillae conspicuous; leaves 2.5–3.0 mm long, strongly crisped when dry; alar cells conspicuously differentiated..... 1. *H. crispulum*

A common species in the north and high mountains almost throughout Russia. It can be recognized in many cases by its numerous capsules. Thin setae, rather thin, membranaceous urn walls with tiny longitudinal ruffles, as well as strongly crisped leaves are distinctive features of the species.

— Lamina partially bistratose above; cuticular papillae inconspicuous; leaves 2.0–2.5 mm long, curved inwards when dry; alar cells usually not or weakly differentiated 2. *H. mulahaceni*

It is not always easy to recognize this plant as a species of *Hymenoloma* because cuticular papillae may be absent or inconspicuous. Membranaceous capsule texture and bistratose leaves are distinctive features of the species. The species occurs in Russia in dry and cold high mountains. Pluricellular ellipsoid gemmae in the leaf axils are reported for this species, but they were never observed in Russian collections.

1. ***Hymenoloma crispulum*** (Hedw.) Ochyra, Biodivers. Poland 3: 114. 2003. — *Weissia crispula* Hedw., Sp. Musc. Frond. 64. 13 f. 5-10. 1801. — *Dicranoweisia crispula* (Hedw.) Milde, Bryol. Siles. 49. 1869. — **Гименолома кудрявая**. . 129A–F, 130.

0.5–1 . , 2.5–3.5 0.4–0.6 ,

1. ***Hymenoloma*** Dusén — **Гименолома**
– *Hymenoloma nordenskjoeldii* Dusén,

, 12–18 m.

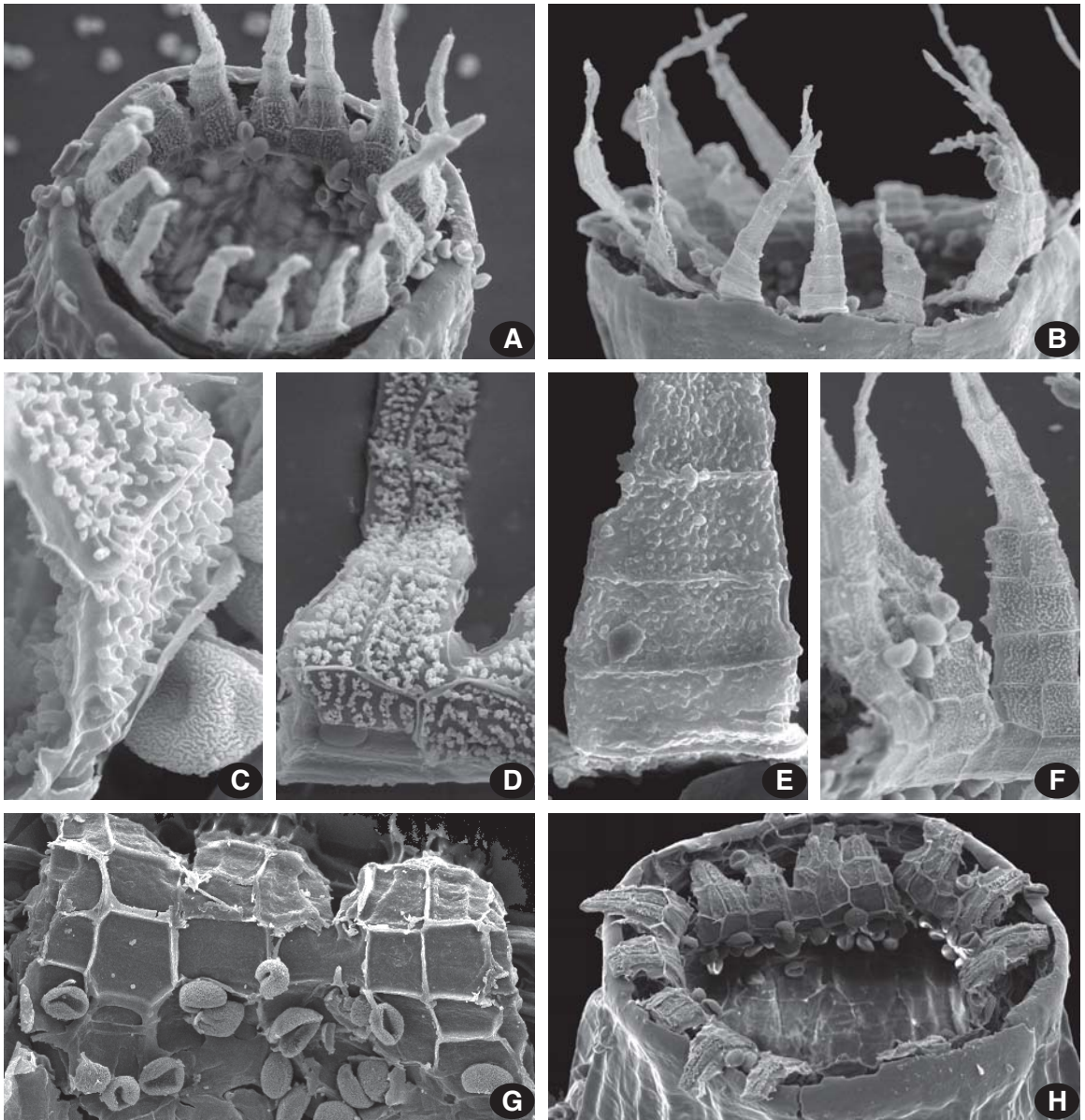
Hymenoloma antarcticum (Müll. Hal.) Ochyra.
8 ,

, 6–8 m,

1–1.5 . 1–

1.5 . 13–18 m.

ύμήν, -ένος –
λώμα, λώματος – (.),



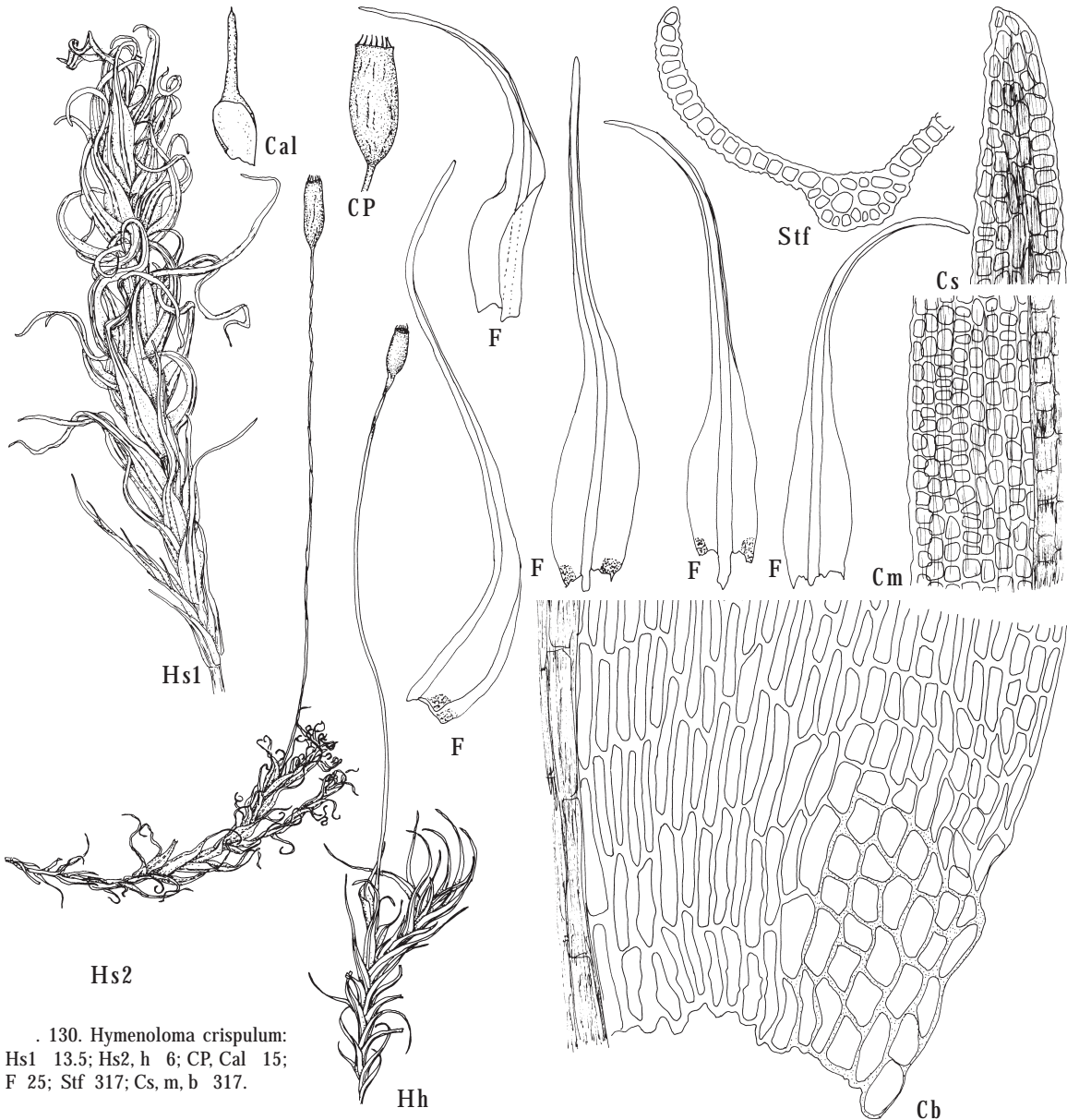
. 129. *Hymenoloma crispulum* (A-F) *H. mulahaceni* (G-H): A, B, H - , 210, 170, 230; (C, E, 1600, 850) (D, F, 690, 300), C D A, E F B; G - , , 170, 1300.

YG Tan SZ NI Ynw Ynh Yne VI Chw Chc Chs Chb
Uhm YN HM Krn Tas Ev Yol Yyi Yko Mg Kkn
Sve Krg Tyu Om Nvs To Krm Irn Yc Yvl Yal Khn Kks Kam Kom
Al Alt Ke Kha Ty Krs Irs Irb Bus Bue Zbk
Am Khm Khs Evr Prm Sah Kur

Mu Krl Ar Ne ZFI NZ Km Kmu Ura
Kn Le Ps No Vo Ki Ud Pe Sy
Sm Br Ka Tv Msk Tu Ya Iv Ko Vl Rz Nn Ma Mo Chu Ta Ba Che
Ku Be Orl Li Vr Ro Tm Pn Ul Sa Sr Vlg Kl As Or
Krd Ady St KCh KB SO In Chn Da

Dicranum mon-
 tanum,

(),
 ()
 ()



130. *Hymenoloma crispulum*:
 Hs1 13.5; Hs2, h 6; CP, Cal 15;
 F 25; Stf 317; Cs, m, b 317.

2. ***Hymenoloma mulahaceni*** (Höhn.) Ochyra, Bryoph. Pol. Carpathians 212. 2008. — *Oreoweisia mulahaceni* Höhn., Sitzungsber. Kaiserl. Akad. Wiss., Math.-Naturwiss. Cl., Abt. 1, 104: 320. 1895. — *Dicranoweisia intermedia* J.J. Amann, Fl. Mouss. Suisse 2: 372. 1918. *D. crispula* var. *intermedia* (J.J. Amann) Podp., Consp. Musc. Eur. 114. 1954. — Гименолома мулаценская. 129G–H, 131.

; 6–12 m,
 (.).
 0.5 1.5
 13–18 m.
 (Müleyhacén,
 Mulhacén), 3480

0.5–1
 , 2.0–2.5 0.3–0.4 ,
 ;
 , (.),

